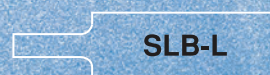

The “no-ouch” pouch.



Protective pouches for digital radiography
simplify infection control,
while minimizing patient discomfort!

Salibag offers an easy, patient-friendly way to prevent cross-contamination from digital radiography sensors. Simply insert the sensor into the foam disposable Salibag sleeve, then place it in the mouth for radiography. Easy to open, easy to remove, easy to use, and easy to dispose of. Salibag protects sensors from humidity, saliva and blood. Better yet, Salibag is easy on your patients, too, thanks to the soft foam corners. And it's easy on your bottom line. Contact your preferred dental dealer to order or request a sample.



SLB-L

#0 - #1



SLB-LL

#2

salibag[®]
PROTECTIVE HYGIENIC POUCHES

Salibag Protective Pouches Make Life Easier for Staff and Patients Alike

Reduce the Risk of Cross-Contamination with Salibag Protective Hygienic Pouches.

- Ideal for digital radiography sensors.
- Soft corners cover up sharp edges of intraoral dental sensor.
- Protect sensors from humidity, saliva and blood.
- Non-toxic super soft foam polyethylene is comfortable for patient.
- Single-use and economical.



#0 - #1

For CCD sensor sizes #0 to #1.
320 pouches per box



Item # 656232



#2

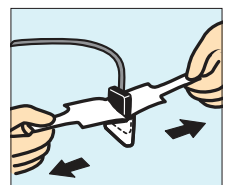
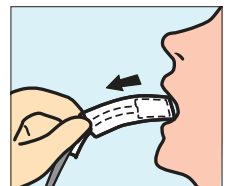
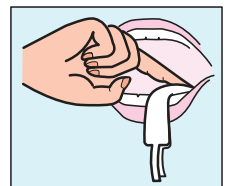
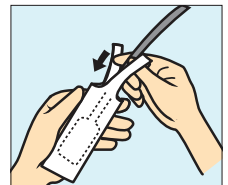
For CCD sensor size #2.
240 pouches per box



Item # 656233

Easy Does It!

1. Gently remove pouch from box. (Never use broken or damaged pouch)
2. Insert CCD sensor into pouch.
3. Take x-ray as usual, positioning CCD sensor in Salibag pouch as illustrated.
4. After the image is taken, gently remove Salibag from patient's mouth by holding strings as illustrated.
5. To remove the clean and dry CCD sensor, open Salibag by pulling the strings as illustrated.



To order, please call your preferred dental dealer or Hager Worldwide at
(800) 328-2335



Salibag is a registered trademark of Hager Worldwide, Inc.

